



THE GREEN CITY *Kraków*

ELCA

Committee of Firms Excursion

Poland – Krakow

18th October 2019 / Friday

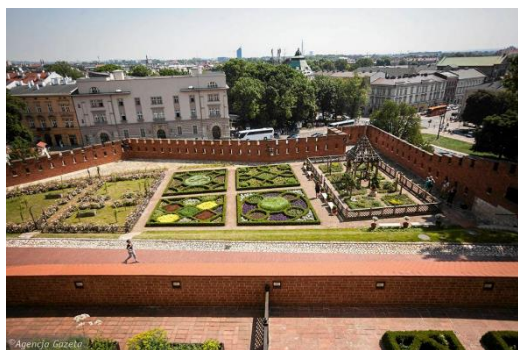
ROYAL GARDENS AT WAWEL CASTLE

Guided Tour by designers of Wawel Royal Gardens: University Lecturer, Professor Agata Zachariasz and Head Gardener of the Royal Castle Gardens Katarzyna Żółciak.

Professor Agata Zachariasz is director of Landscape Architecture Institute at Krakow's University of Technology, author of many projects and science publications in field of landscape architecture, history of gardens and design. Professor Zachariasz performs research and design works in the field of landscape architecture regarding contemporary and historical garden and park settings, green areas and landscape studies also in the spatial planning scale.

Katarzyna Żółciak is Head Gardener at Wawel Royal Castle. Together with Agata Zachariasz and Jarosław Żółciak they are authors of reconstruction of historical royal gardens.

The former garden at Wawel Royal Castle consisted of crossing bricks made of bricks carefully arranged on the mortar, and the quarters created between them. Special herbs and spices were grown in special oak boxes. Below the garden of Queen Bona was the garden of her husband, King Sigismund I the Old, who had a holiday character. There was a gazebo on it, called "Paradise", and the castle accounts mention the existence of a vineyard and aviary. Using historical accounts, the gardens' appearance on two terraces was very faithfully reconstructed. In the oak boxes as before, herbs and spices appeared. Oleanders, fuchsias and cassia were planted in magnificent ceramic pots. All this creates a unique example of a small spice-rest renaissance royal garden.



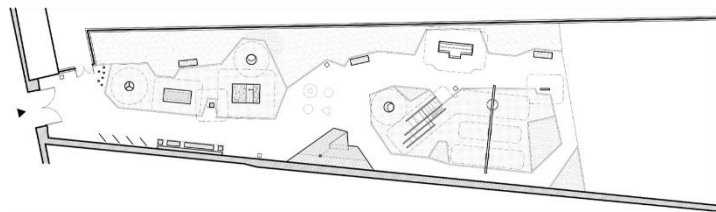
ARCHEOLOGICAL PLAYGROUND

Guided Tour by Anna Komorowska – landscape architect and playground designer, head designer and owner of 'pracownia k.' design studio.

Anna Komorowska together with her husband Michał Rokita are owners and head designers of 'pracownia k.' office specialized in outdoor playgrounds design. They are saying about themselves that they are more designers of 'play-gardens' and 'play-structures' than playgrounds.



Due to the proximity of the Archaeological Museum, the leitmotif of the playground is archeology. The main attraction are four fun elements inspired by human residences from different eras: a cave, a hut, a hut and a tenement house. All these elements are presented in the form of mock-ups at the exhibition in the museum. They play the role of toys on the playground. These are basically traditional devices found on playgrounds, such as swings, slides, carousels, but in a non-standard form. The cave is a wooden hill to climb, huts to a set of several slides, houses to the swings, and instead of a large carousel, we propose smaller twists, scattered throughout the area.



PARK KRAKOWSKI

Park Krakowski - historical garden designed by LUZ Landschaftsarchitekten München and Marcin Gajda Landscape Architecture: in the presence of Mr Marc Weisshaar - representative of LUZ Landschaftsarchitekten München and Marcin Gajda - owner and head designer of Marcin Gajda Landscape Architecture.

Marc Weißhaar represents design studio based in Munich, Germany - 'LUZ Landschaftsarchitekten München', where together with Heiner Luz, owner of the office they specialize in designing perennial meadows in trend of the 'Leading Aspects'. Mentioned office together with Krakow based design studio GAJDA Landscape Architecture redesign Park Krakowski in the process of revitalization where Heiner Luz was responsible for planting design.

Marcin Gajda is owner of GAJDA Landscape Architecture office, based in Krakow. The design studio operates continuously over 20 years and it is author of many public spaces not only in Krakow but in whole country. Marcin is saying that turning point of his imagination of landscape was studying Irish landscapes during the holidays at youthful times. In his projects You can notice those similarities - soft path lines, thought vistas and natural materials such as wood or stone.

Park Krakowski is a historic garden – it was the first public garden established outside of the then city center in 1885. Originally, the area of the park was something about 7 hectares and there was many functions such as theater, cafe, restaurant, dairy, swimming pool, a pond with boats, and arena for cyclists, menagerie, playground, slide and even pavilions with music. Over the years, the park changed its layout and surface area and in the years 1938-1939 it was transformed into a contemporary city park with a free composition. The revitalization of the park consisted of comprehensive conservation of the historical garden along with adaptive treatments. The project assumed the revalorization of greenery and park furniture, as well as the modernization of the park's infrastructure and lighting.





19th October 2019 / Saturday

VISTULA STATION PARK

Visit in the Vistula Station Park guided by Wojciech Jakubowski, designer of Vistula Station Park and head of JAKABE design studio.

Wojciech Jakubowski together with Stanisław Karczmarczyk and Wiesław Bereza refounders of JAKABE design studio in Krakow. Office is the result of a combination of many years of experience, engineering workshop and passion for creation. It allows us in a professional and responsible manner, despite the existing limitations and conditions, to meet the expectations of our clients, without giving up on creative aspirations. Currently, the studio is run by Wojciech Jakubowski together with the team.

The project is an outstanding example of how to revive post-industrial areas, giving them new, green lives. Creating a park in a fashionable expanding district is also an example of social participation - cooperation of residents, city authorities and designers. The aim of the project was to regain space for residents, composing the urban landscape as a river park. By arranging the remains of the former railway station, diversifying new functions and making the space more attractive, a perfect place for rest and recreation was created. The area is divided into many zones, for example: a relaxation zone, a dance stage, a municipal farm and multi-purpose pavilion.



PARK CZYŻYNY / UNDER CONSTRUCTION

Visit in the Park Czyżymu (under construction) in presence of Piotr Kempf - director of Krakow City Greenery Department.

Park Czyżyny is located on the site of the former airport in Krakow. The design assumptions of the park take into account the use of the park by all age groups of users, assuming various park functions. A playground for children is being designed together with an activity zone for older people; multifunctional sports ground; area of sports equipment for street work and parkour; square for artistic performances; a square for museum meetings and exhibitions; picnic fields; walking alleys; wide multifunctional avenues; a social garden and more.





PLAYGROUND IN POLISH AVIATORS PARK

Guided tour with Wojciech Jakubowski, designer of aviatory playground in Polish Aviators Park, head of JAKABE design office.

Wojciech Jakubowski together with Stanisław Karczmarczyk and Wiesław Bereza refounders of JAKABE design studio in Krakow. Office is the result of a combination of many years of experience, engineering workshop and passion for creation. It allows us in a professional and responsible manner, despite the existing limitations and conditions, to meet the expectations of our clients, without giving up on creative aspirations. Currently, the studio is run by Wojciech Jakubowski together with the team.

The project changed the neglected space of the existing playground in Lotników Park, turning it into a place that attracts crowds of Cracovians. Revitalization of the area, through a completely new composition and the introduction of interesting and diverse play equipment, significantly increased the recreational and recreational values of the largest park in Krakow. The main idea was to create an attractive place to play for a large group of users, and at the same time a safe and friendly place. The shapes of individual squares and their architectural form alludes to the identity of the place, emphasizing the airport's air character. A modern look at landscape architecture is combined here with the functionality of the entire space.

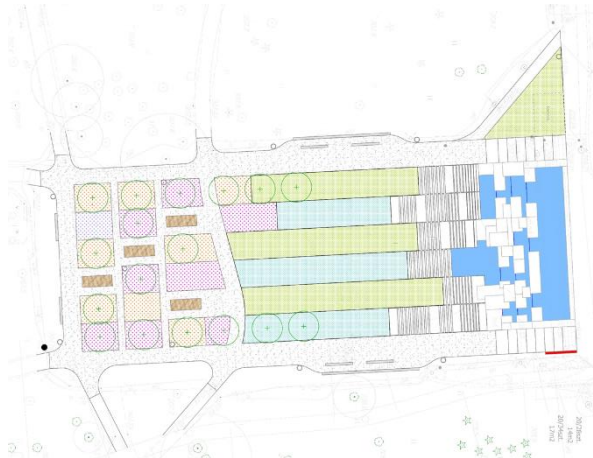


FOUNTAIN IN POLISH AVIATORS PARK

The opening square of the park redesigned by Charlie Hussey SUHUHA design studio and Marcin Gajda Landscape Architecture.

Charlie Hussey started his career in the late Sir James Stirling office where worked on a number of international commissions and competitions. Then he was invited to work with Renzo Piano's office in Italy. He returned to the UK in 1997 and established Sutherland Hussey Architects with his long term colleague and friend Charlie Sutherland. Within a few years the practice completed a number of award winning projects across the UK. Charlie is also a lecturer at universities including Oslo, Aachen, Cambridge and more.

The design is conceived as an abstraction of the natural landscape. Locally sourced granite slabs express the idea of the natural rock emerging from the eroded earth, formed by the action of water. The fountains express the dynamic qualities of water and the capacity to form fissures between granite taking the form of streams and waterfalls. The change in level between street and park is exploited to heighten this experience, whilst the fissures between granite slabs offer a playful landscape for kids to enjoy.



PARK REDUTA

Visit in Park Reduta guided by designer Marek Sanecki - Autorska Pracownia Projektowa JWMS Sp. z o.o.

Marek Sanecki graduated Architecture and Urban Planning and Landscape Architecture at the Faculty of Architecture and Urban Planning of the Krakow University of Technology. He has been working professionally since 2010. The author of revitalized projects and newly designed city parks, in particular the Reduta Park project in Krakow and the revitalization of Saline Plants in Bochnia, as well as public utility buildings - among others Revalorisation of the Saltworks Castle in Bochnia.

Park Reduta is a newly developed city park in Krakow. In the park there are, among others multifunctional recreational pavilion, summer cinema, playgrounds for small and large children, dog park, garden and naturalistic part. The distinguishing feature is the original shacks and paths made of wooden stakes made of

material obtained during the necessary commas. The central playground due to the slope of the area was designed in terraces and the reinforced concrete retaining walls were treated as a sculptural element. The planting design is dominated by native species composed in a geometric way, while in the forest part as a free complement to the existing greenery.



All pictures via this link: [ELCA CoF Excursion day2 Krakow](#)